

WuXi AppTec Genetic Toxicology Services

For Inquiries:

Tel: +86 (512) 6603 5409
Fax: +86 (512) 6598 1002
Email: CS@wuxiapptec.com

WuXi AppTec is a global leader in providing discovery, testing and manufacturing services for the pharmaceutical, biotechnology and medical device industries. Research-driven and customer-focused, with operations in China and the U.S., WuXi AppTec offers a broad and integrated portfolio of services designed to assist our customers with cost-effective and efficient outsourcing solutions.

The Genetic Toxicology Laboratory at WuXi AppTec (Suzhou) provides GLP genotoxicity assays in support of regulatory filing as well as genotoxicity screening assays for safety lead optimization.

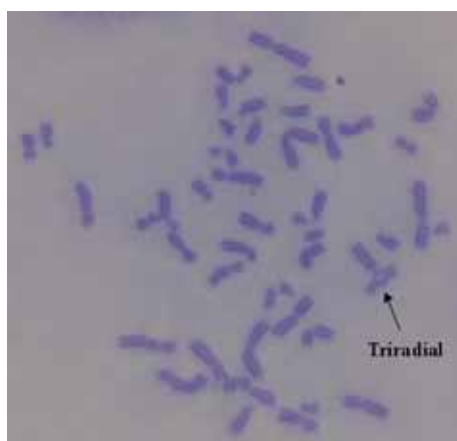
The Genetic Toxicology Laboratory at WuXi AppTec (Suzhou) is GLP certified by OECD and SFDA.

Non GLP Genotoxicity Screening Assay

- Mini-Ames Assay
- *In Vitro* Micronucleus Assay

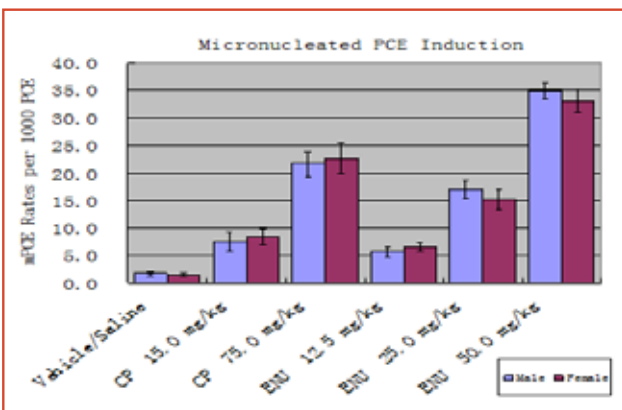
GLP or non GLP Genotoxicity Assay

- Ames Assay
- *In Vitro* Chromosome Aberration Assay (CHO-WBL cell or Human Lymphocyte)
- *In Vivo* Micronucleus Assay (Mouse or Rat)
- *In Vitro* Micronucleus Assay (CHO-WBL cell)
- MLA assay (Mouse lymphoma L5178Y cell)



Chromosome aberration in Human Lymphocyte

A metaphase spread prepared by Giemsa staining (non-banded) showing various types of aberrations (Triradial indicated). This was induced by Mitomycin C at 1.0 μ M.



mPCE Induction by ENU

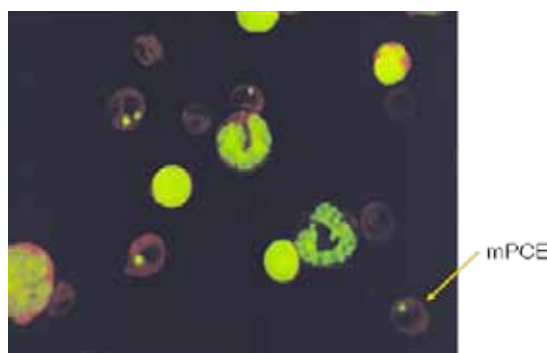


Image of mPCE induced by ENU

ICR mice were treated (by single IP dose) with CP (cyclophosphamide) as the positive control and ENU (Ethyl Nitrosourea) as the test article. ENU elicited a statistically significant increase in the frequency of mPCE (micronucleated Polychromatic Erythrocyte) over the concurrent vehicle control at all dose levels (ANOVA, $p < 0.05$) and a positive dose-response trend was observed at the 24-hour sampling time.

For more information on WuXi AppTec's services please contact:

U.S.
+1 (651) 675 2000 • +1 (888) 794 0077
info@wuxiapptec.com

China
+86 (512) 6603 5409
cs@wuxiapptec.com

www.wuxiapptec.com